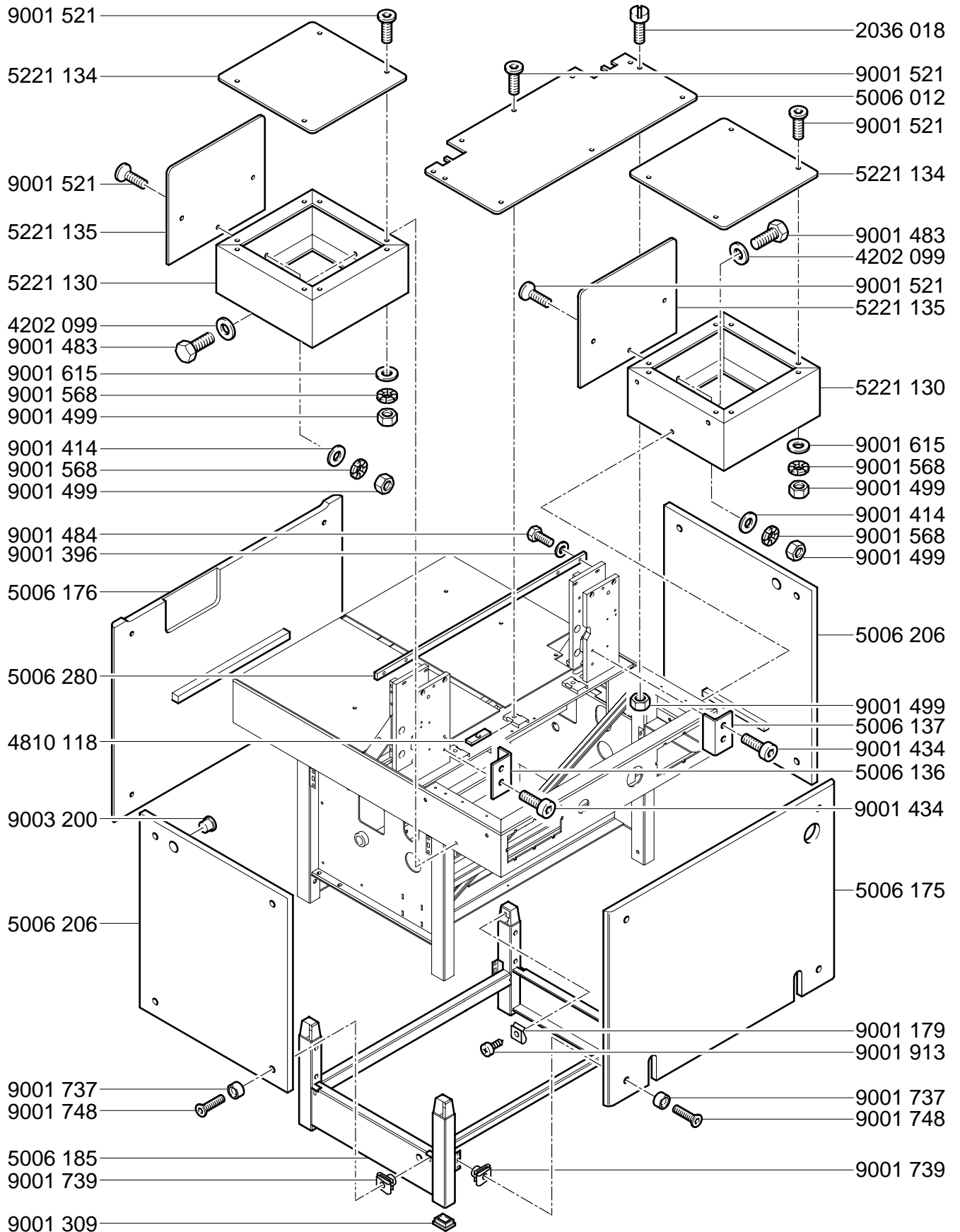


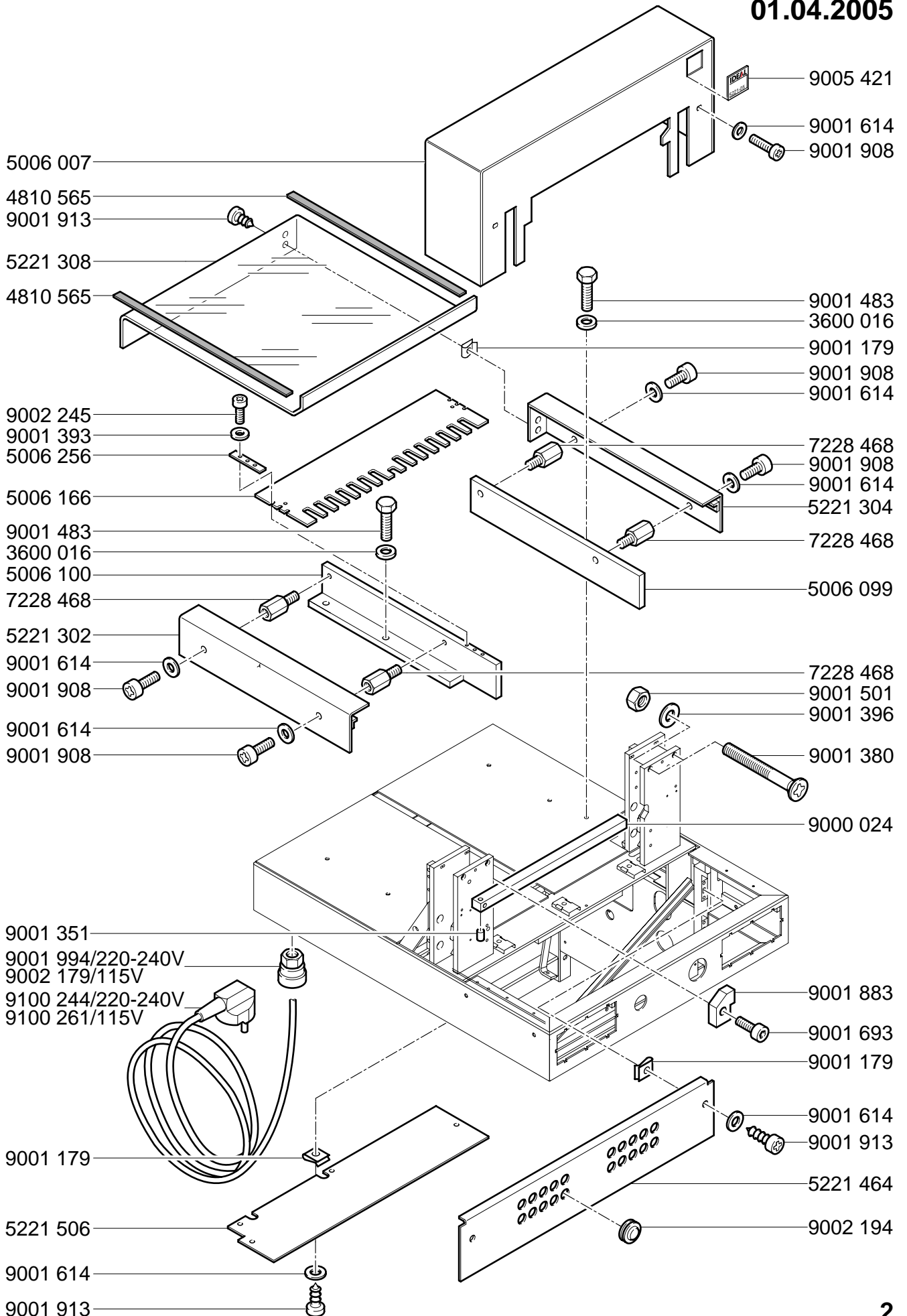
# Mod. 5221-05EP

01.04.2005



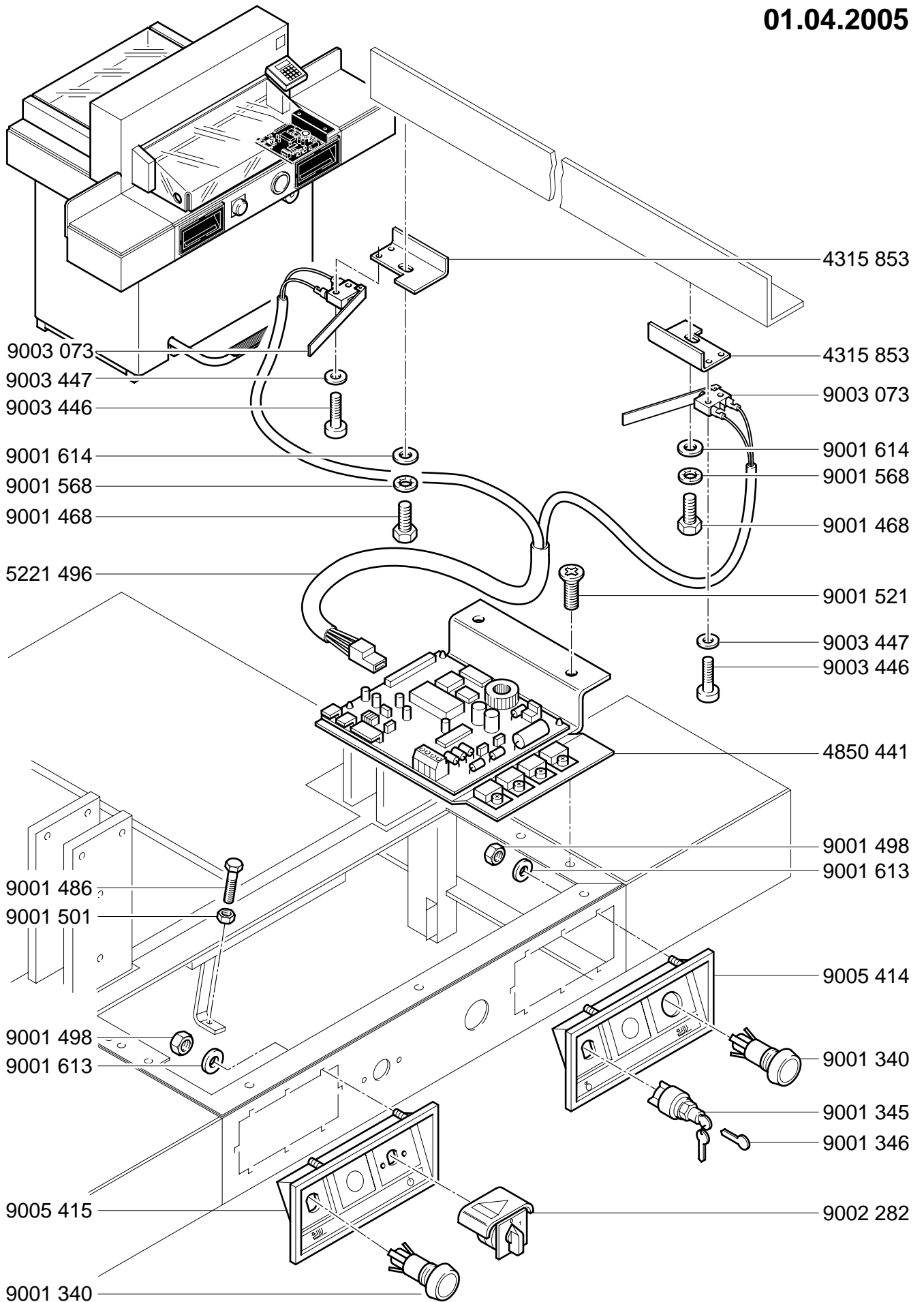
# Mod. 5221-05EP

01.04.2005



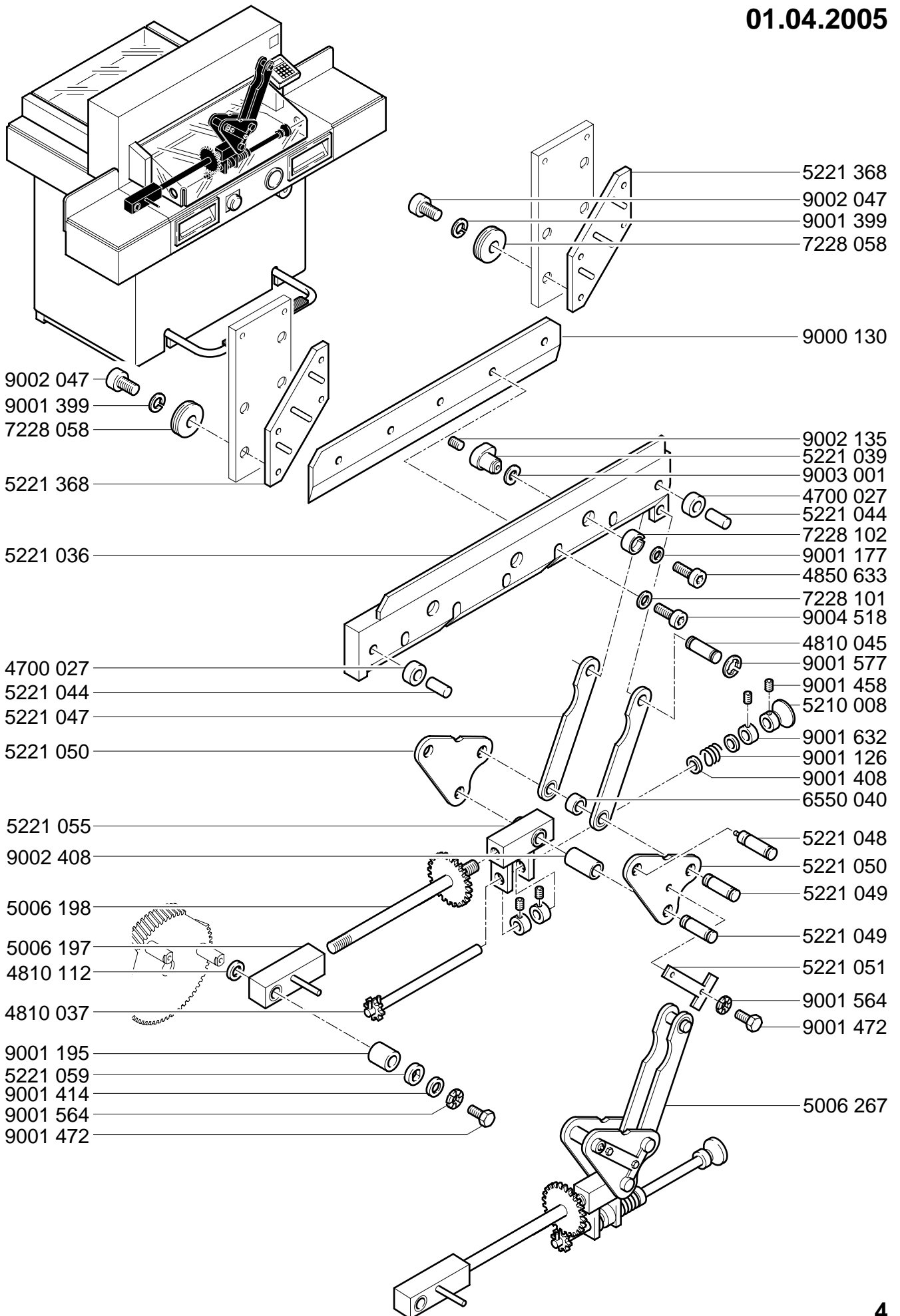
# Mod. 5221-05EP

01.04.2005



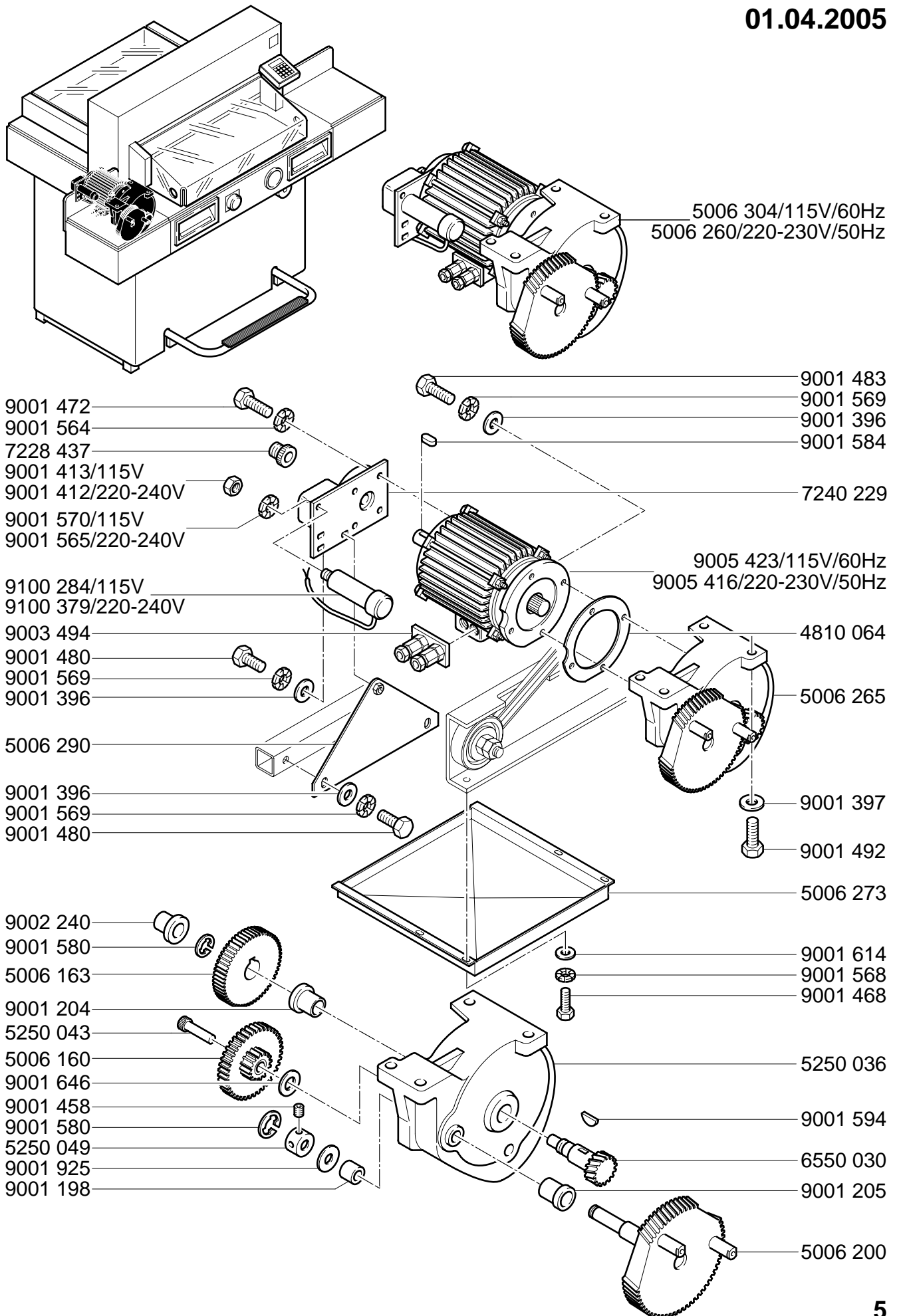
# Mod. 5221-05EP

01.04.2005



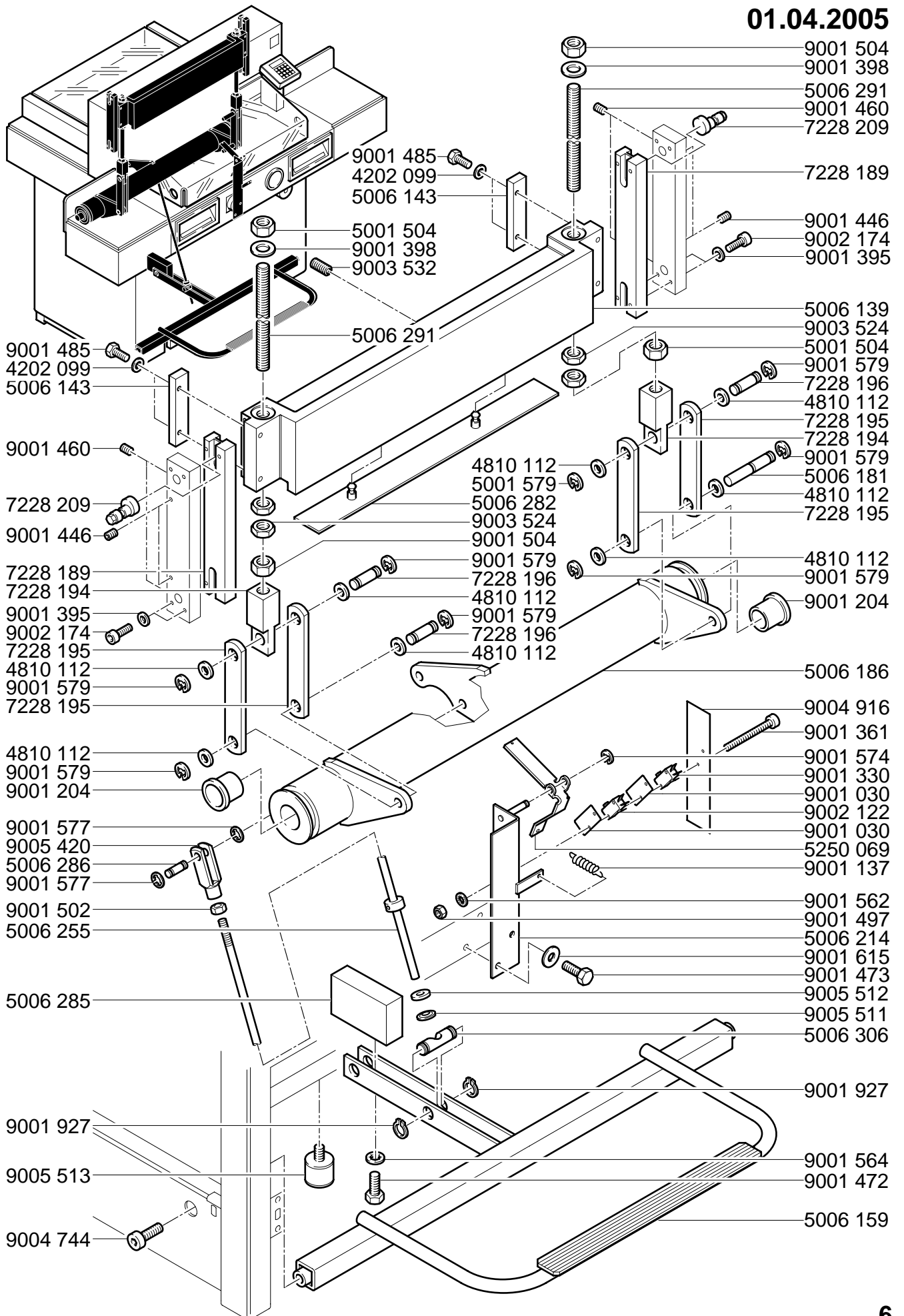
# Mod. 5221-05EP

01.04.2005



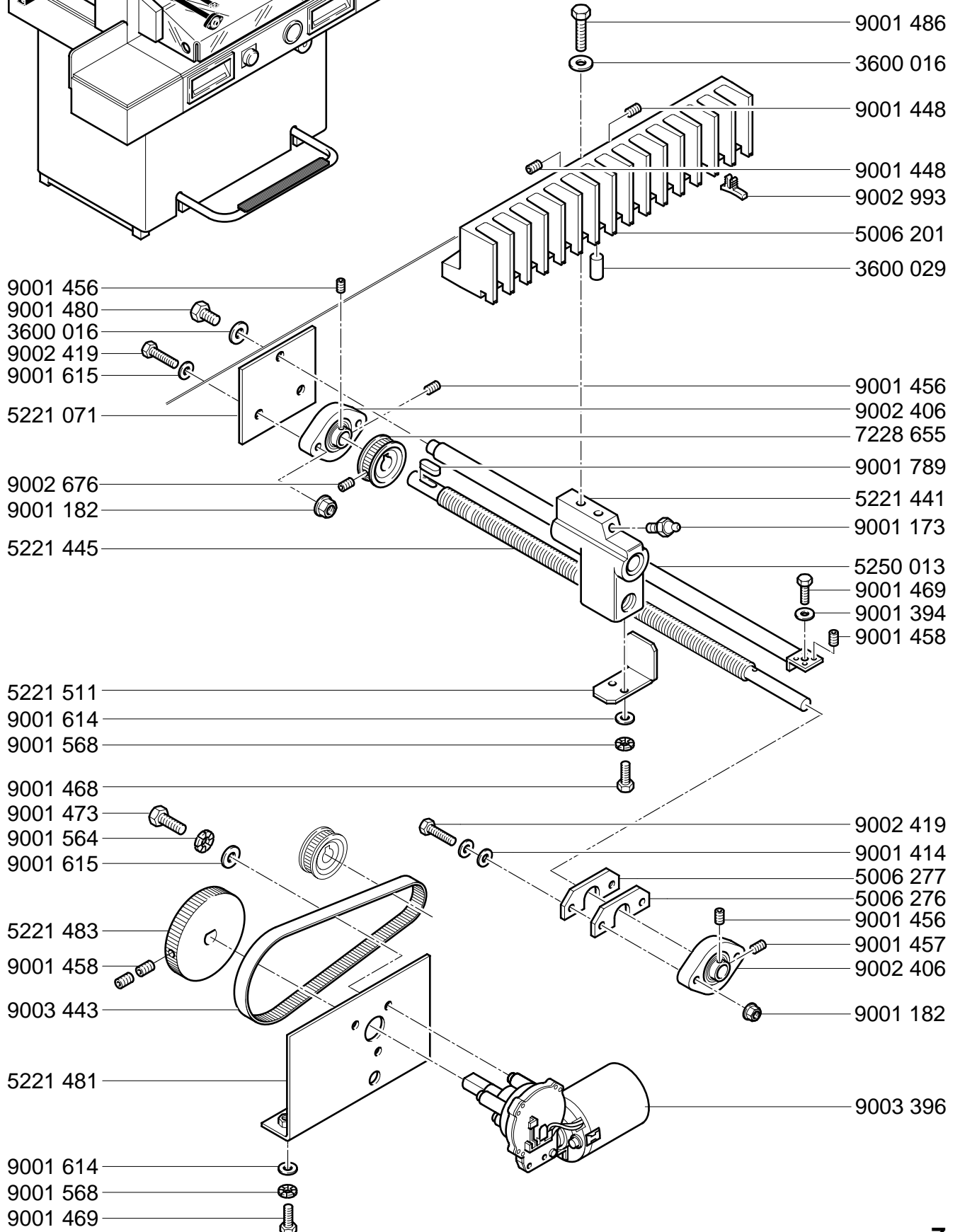
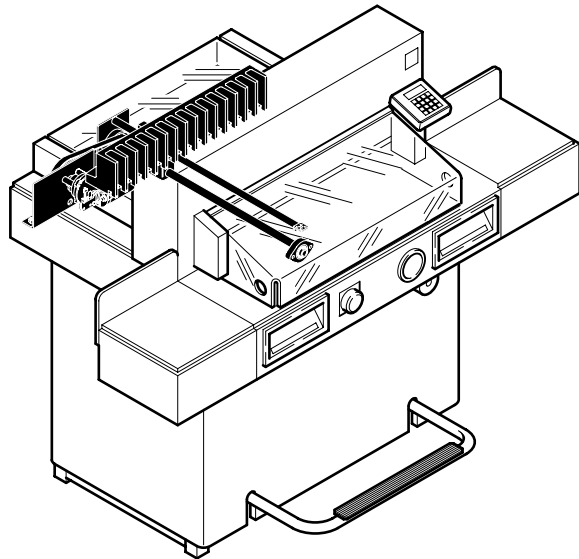
# Mod. 5221-05EP

01.04.2005



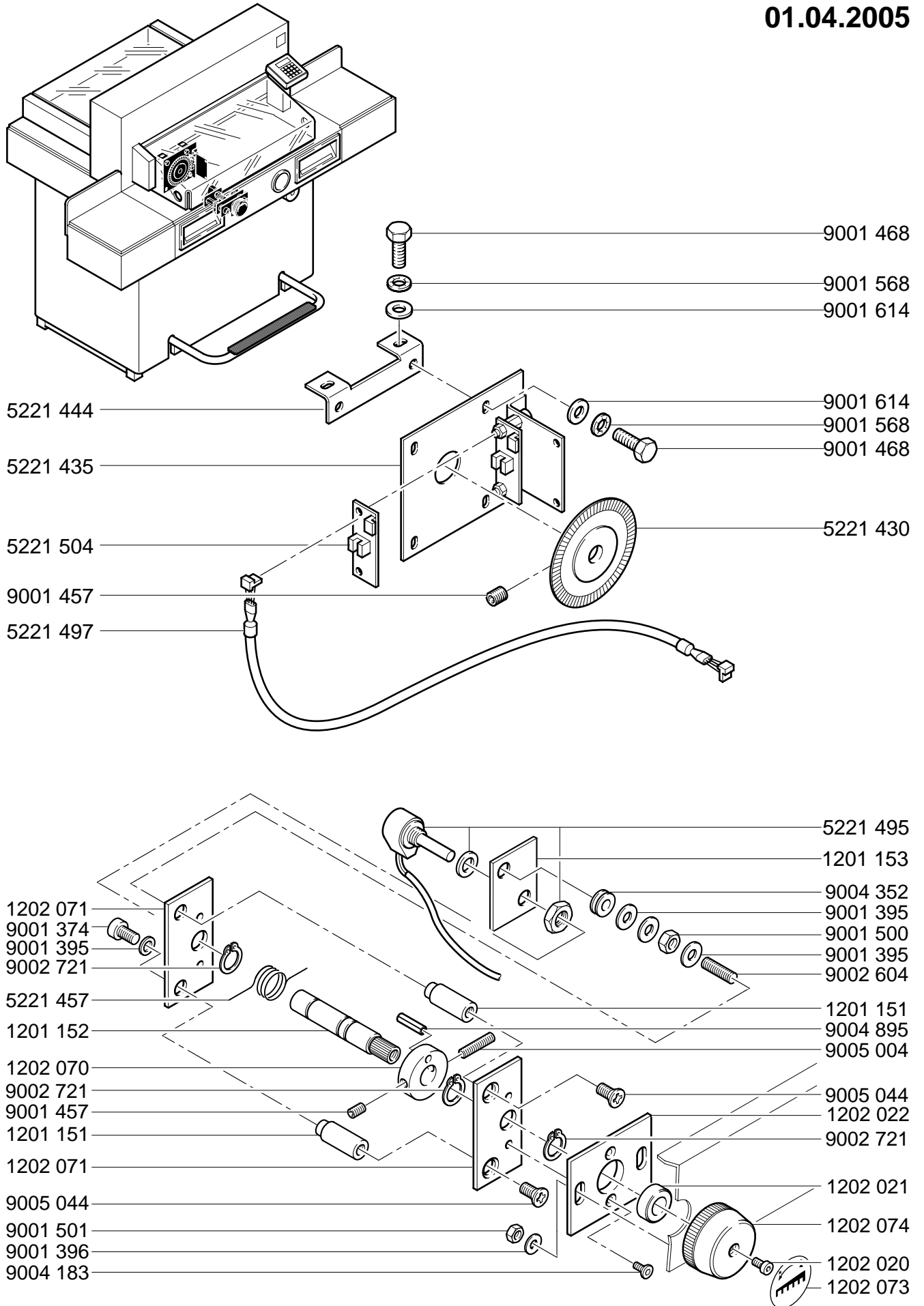
# Mod. 5221-05EP

01.04.2005



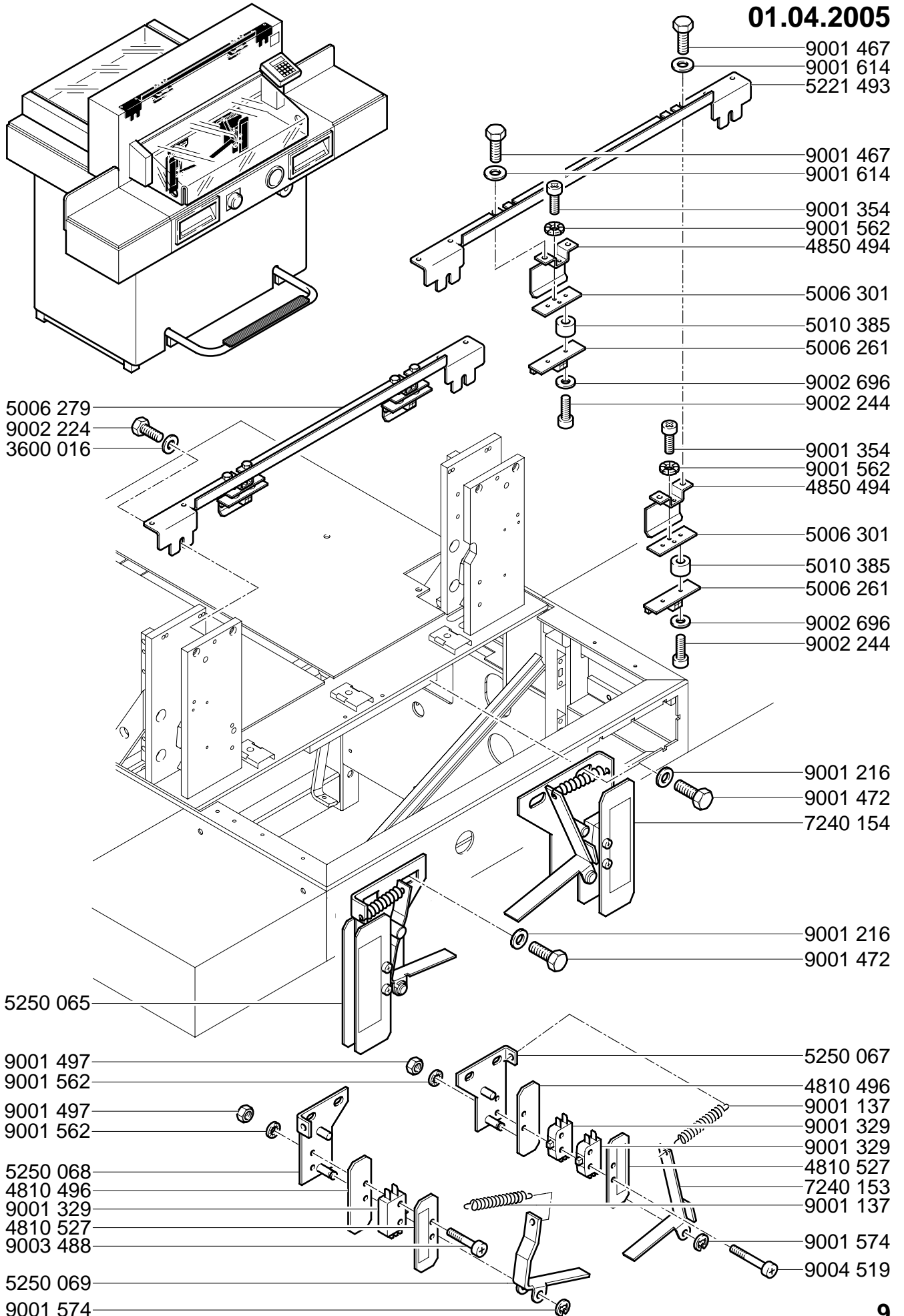
# Mod. 5221-05EP

01.04.2005



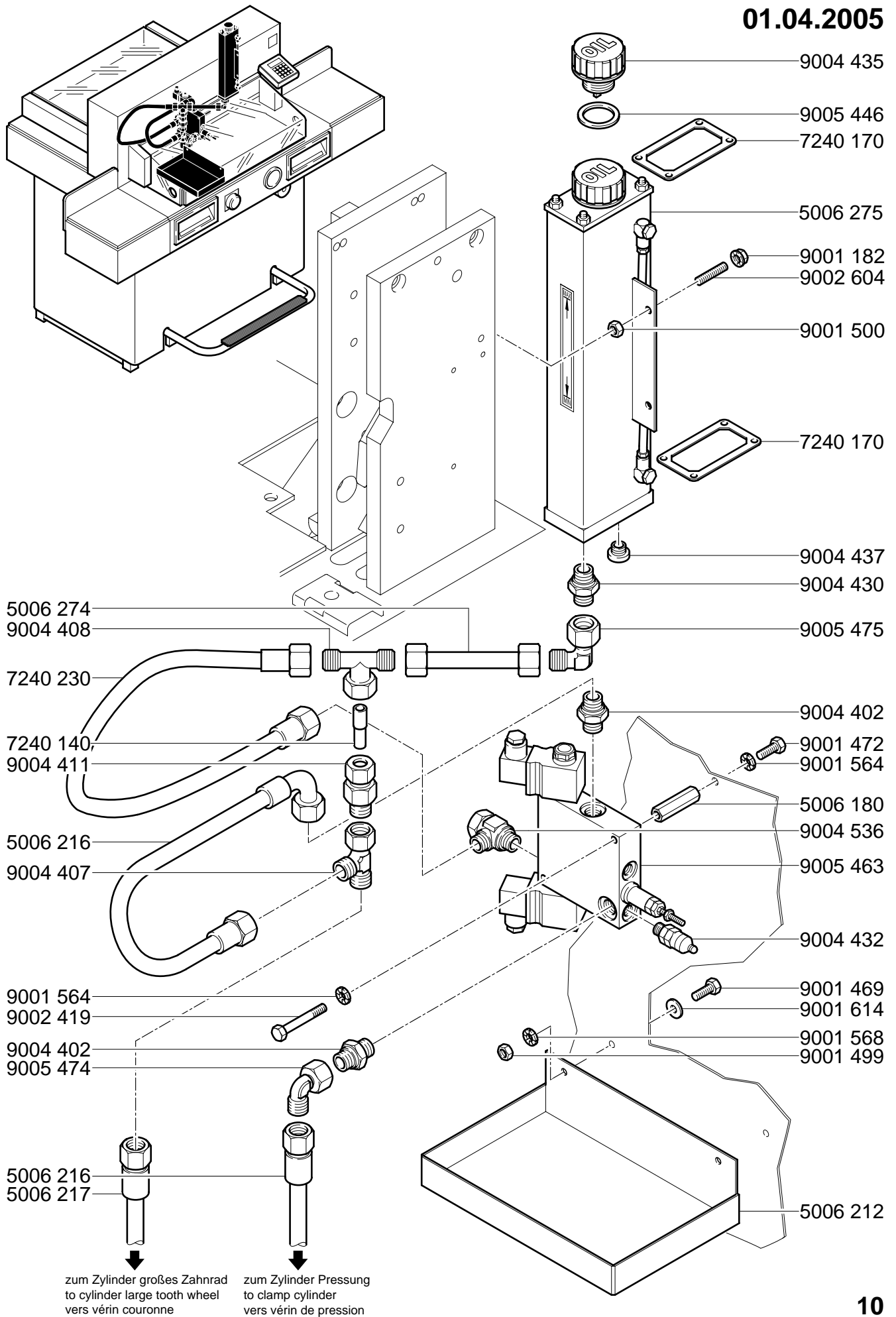
# Mod. 5221-05EP

01.04.2005



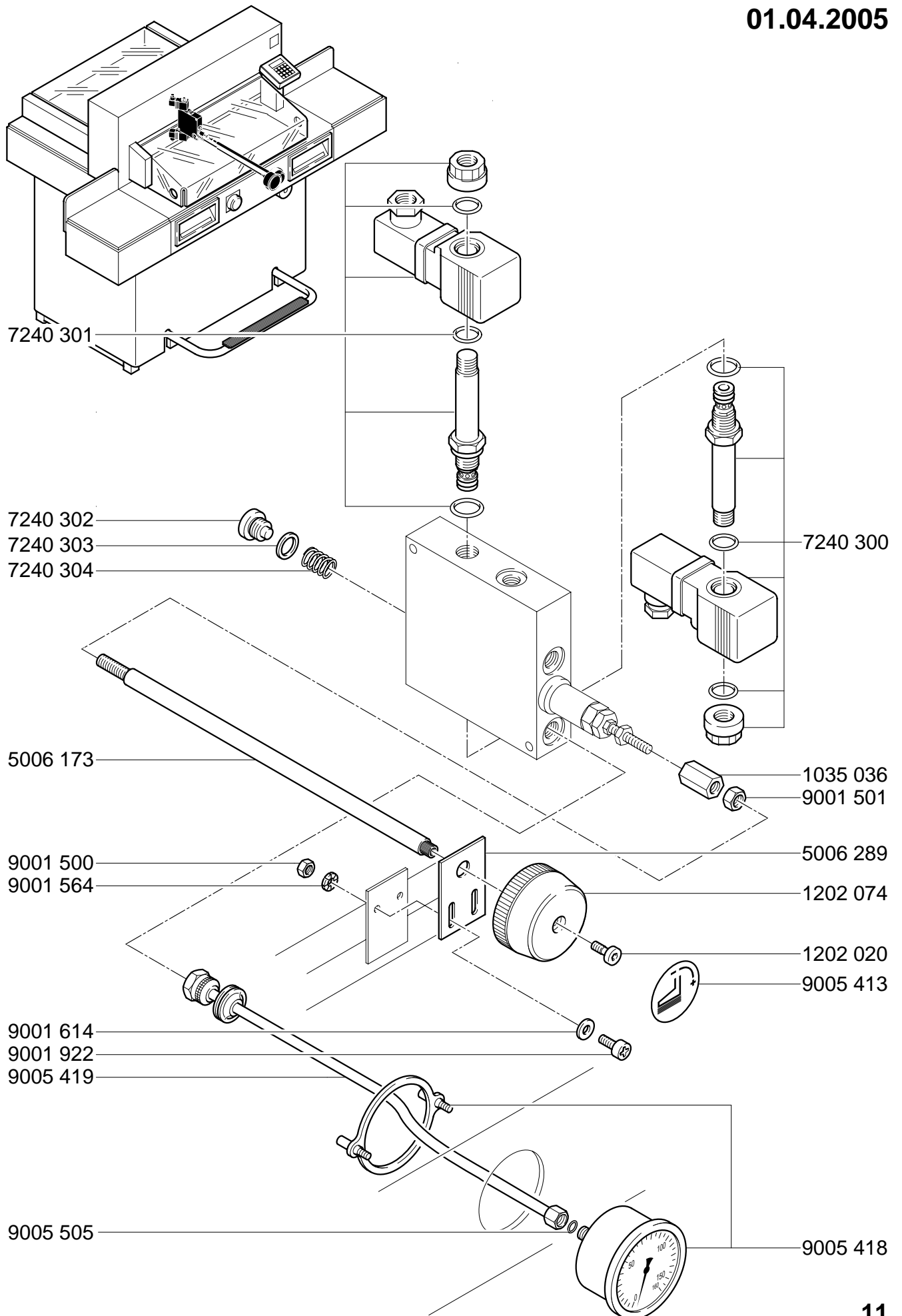
# Mod. 5221-05EP

01.04.2005



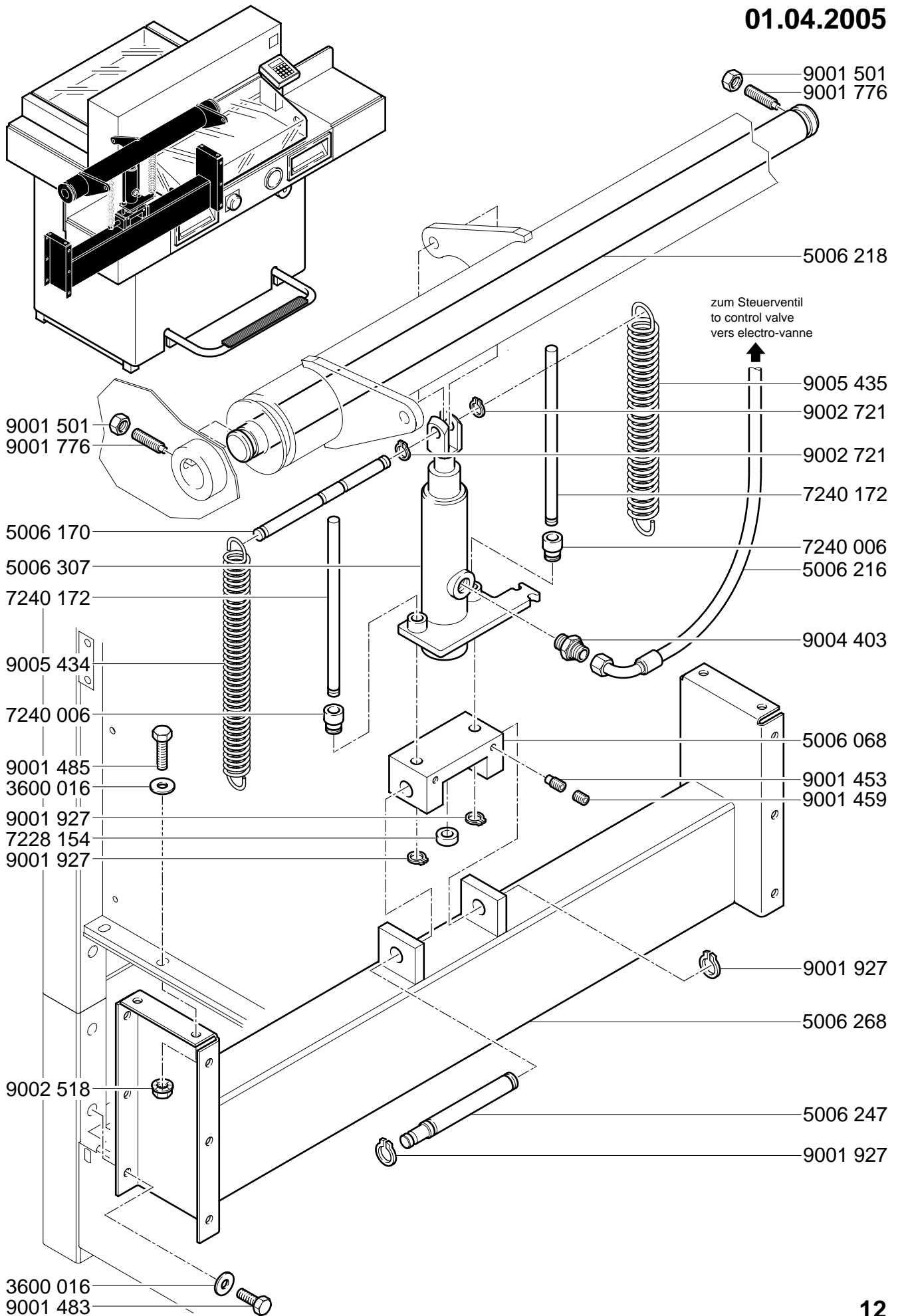
# Mod. 5221-05EP

01.04.2005



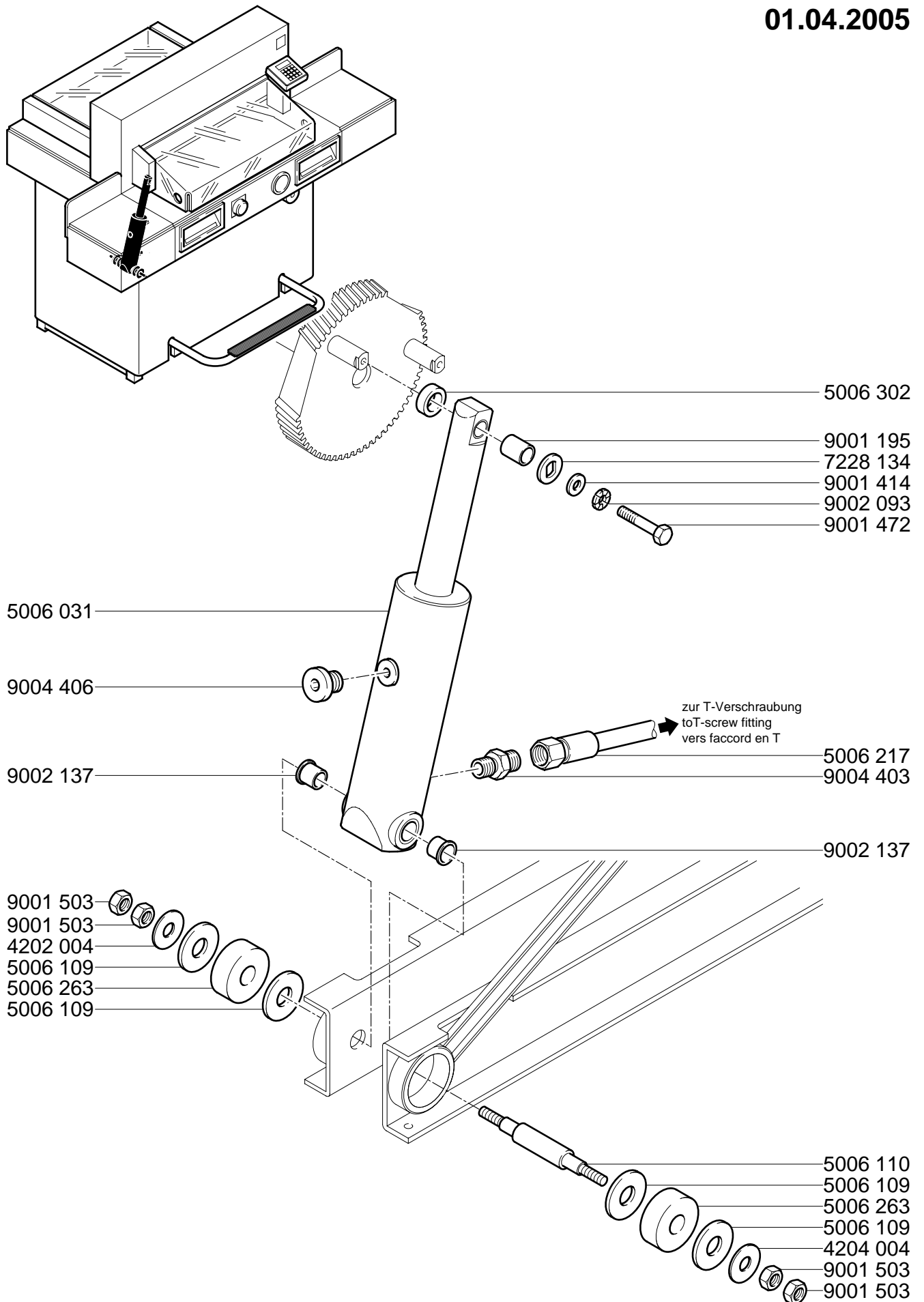
# Mod. 5221-05EP

01.04.2005



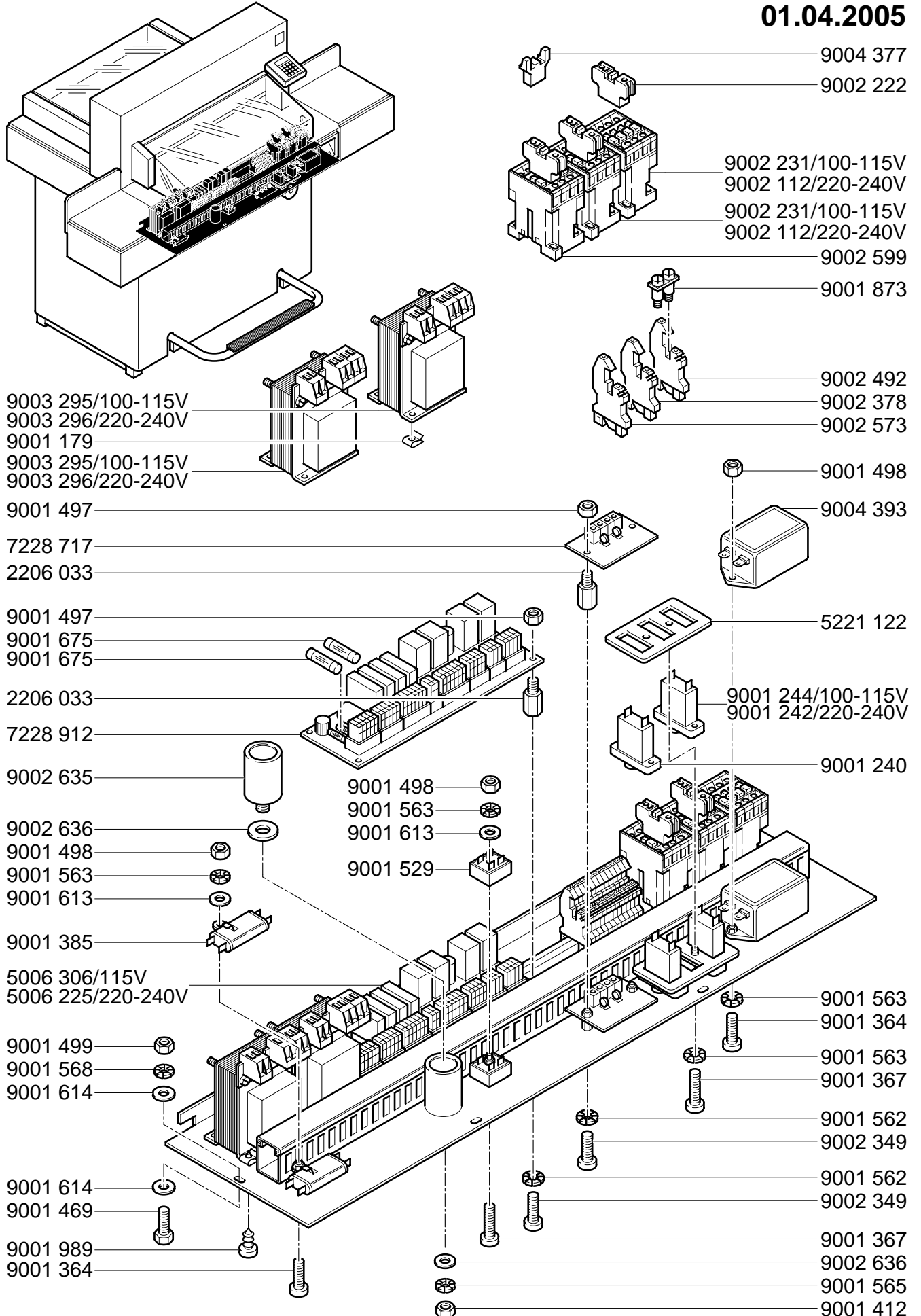
# Mod. 5221-05EP

01.04.2005



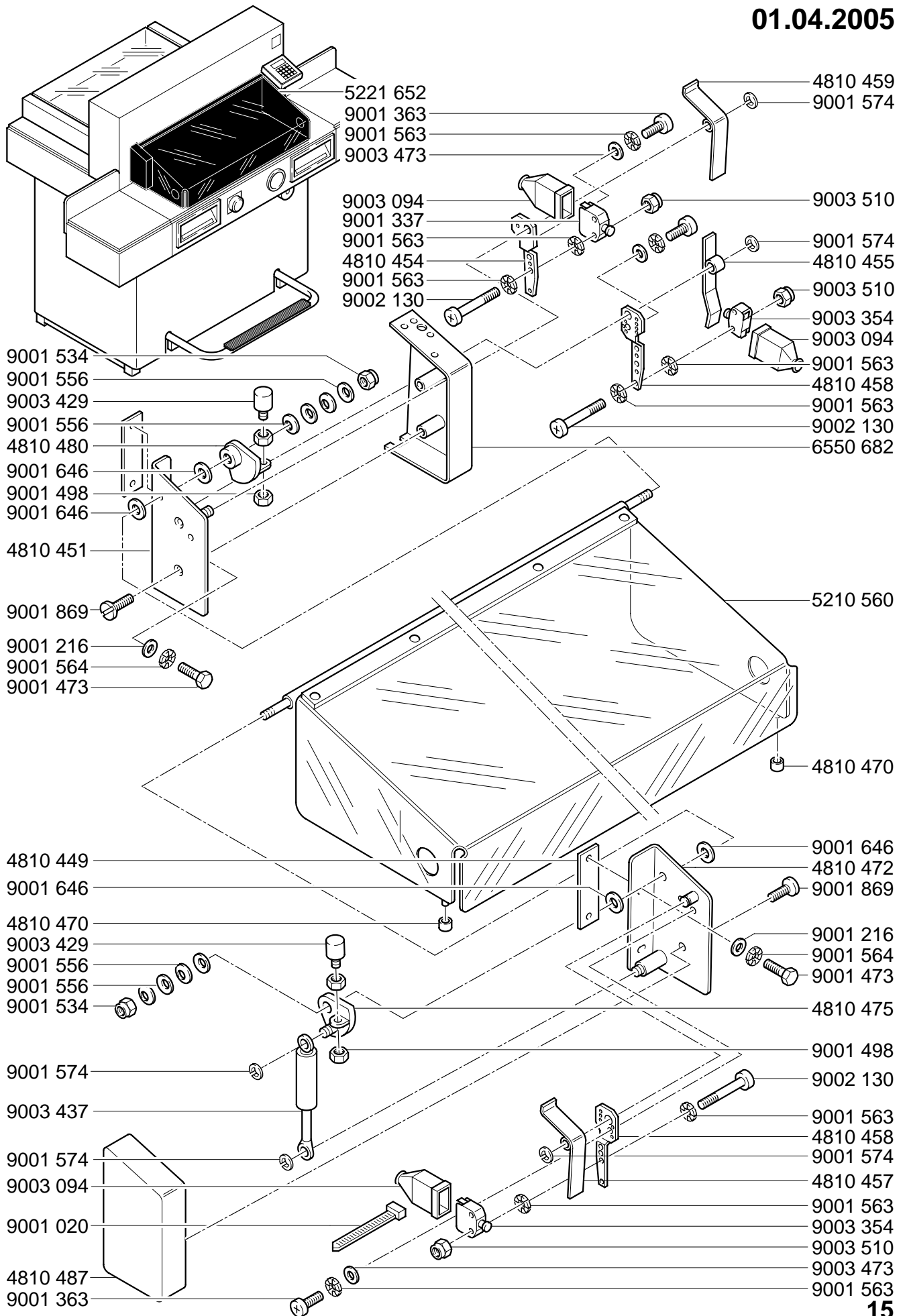
# Mod. 5221-05EP

01.04.2005



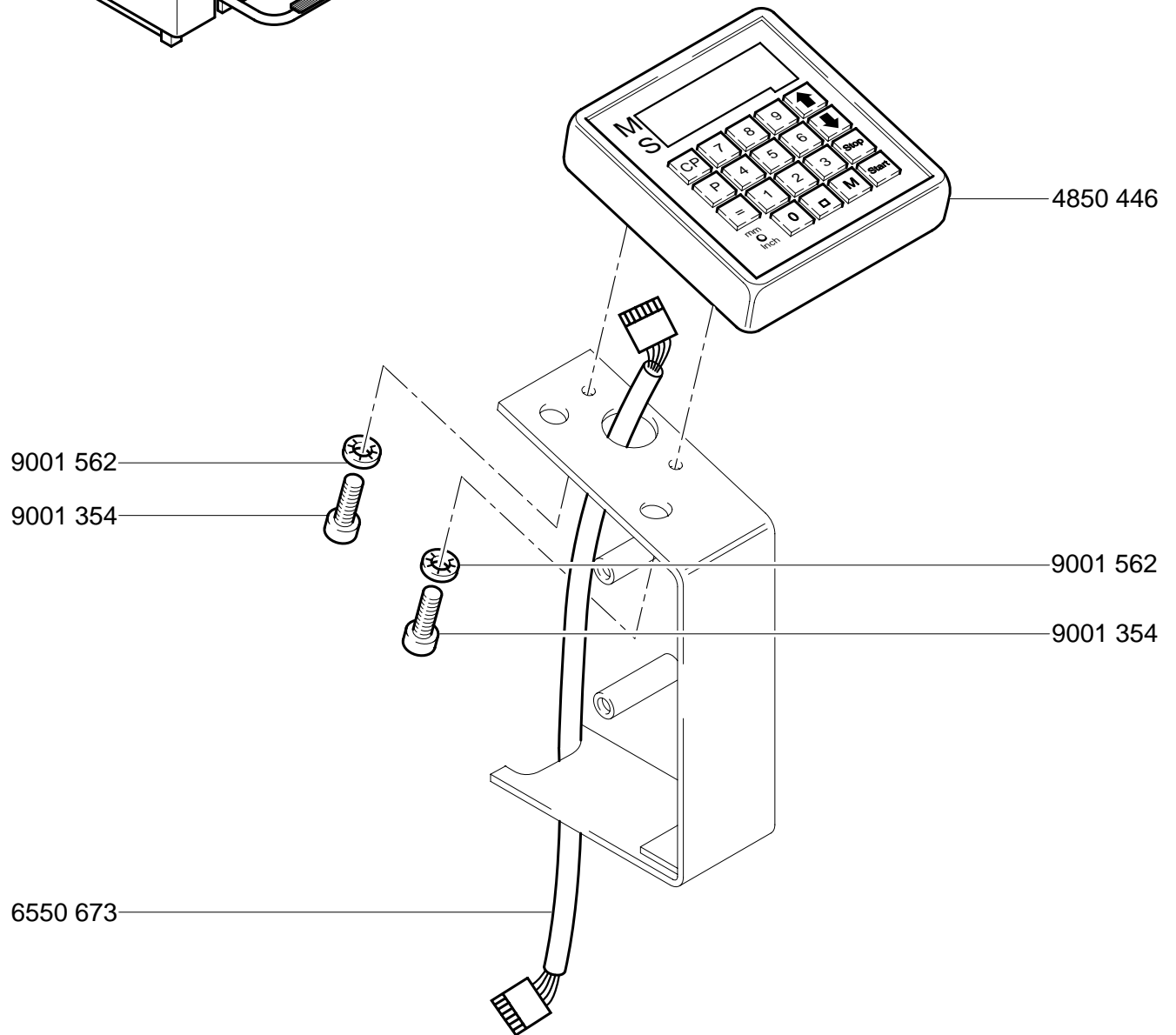
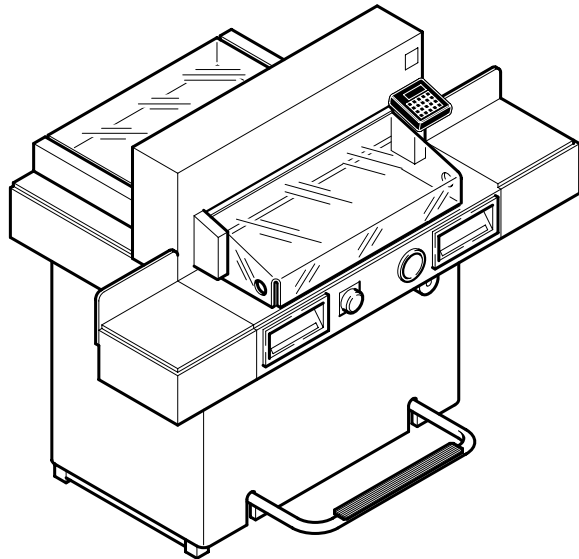
# Mod. 5221-05EP

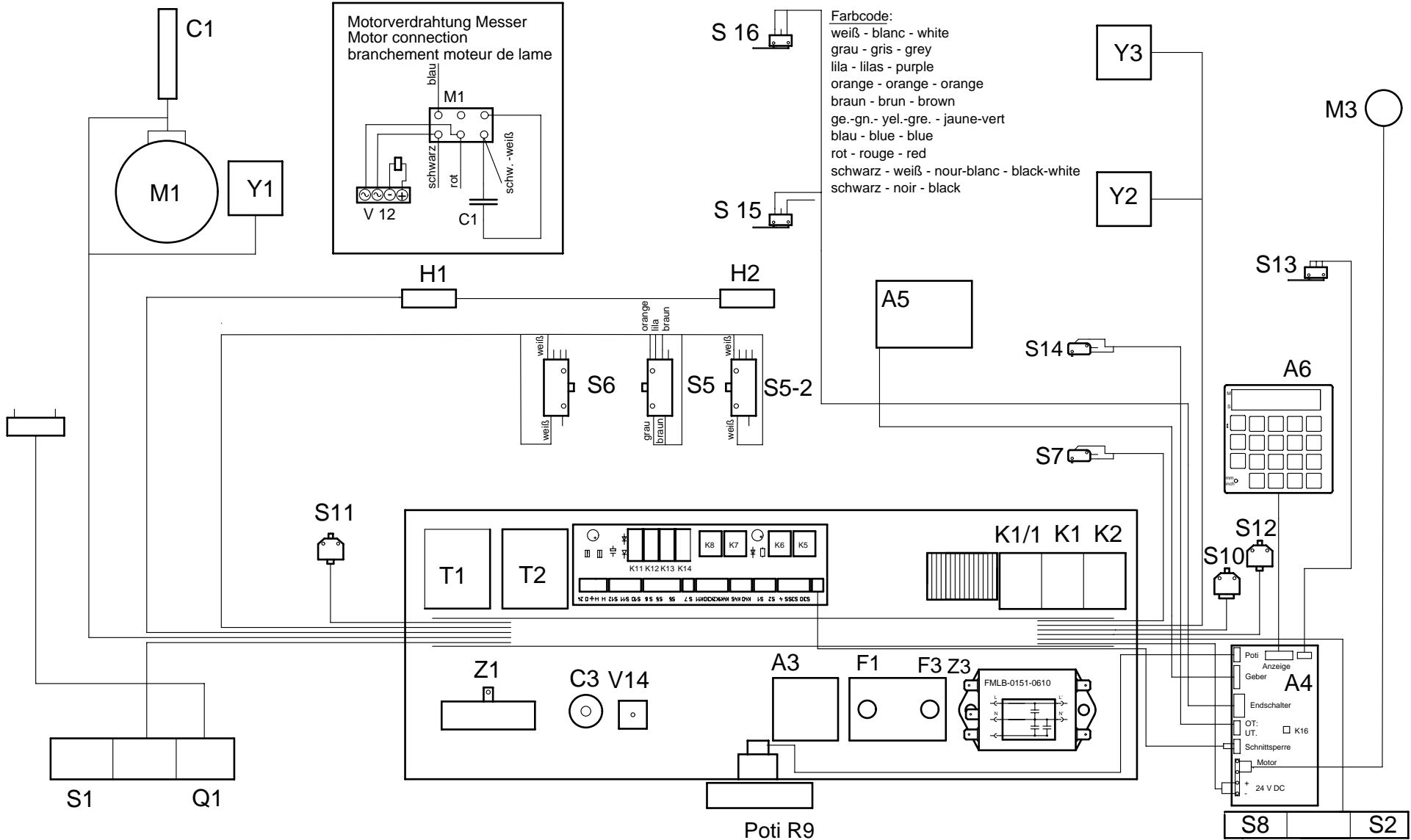
01.04.2005



# Mod. 5221-05EP

01.04.2005





# Mod. 5221-05EP

01.04.2005

Anschlußplan 5006-05EP A  
 Conecting diagram 5006-05EP A  
 Diagramme de branchement 5006-05EP A





## Index 5221-05EP

- 1 -

Code	Deutsch	English	Français	Holländisch	Italiano	Espanol
A1	Platine Steuerung	PCB - control	Platine de commande	Stuurprint	Scheda controllo	Placa de control
A3	Platine Bremse	PCB - Brake	Platine Frein	Remprint	Scheda Freno	Placa de Reno
A4	Platine Rückanschlag	PCB-backgauge	Platine butée arrière	Zadelmotorsturing	Scheda di battuta posteriore	Placa escuadra trasera
A5	Platine Geber	PCB-counter	Platine compteur d'impulsions	Print teller	Scheda contatore	Placa del contactor
A6	Platine Tastatur, Anzeige	PCB keyboard, display	Pupitre de commande EC	Print display EC	Scheda display EC	Placa de display EC
C1	Kondensator	Capacitor	Condensateur	Condensator	Condensatore	Condensador
C5	Kondensator	Capacitor	Condensateur	Condensator	Condensatore	Condensador
C6	Kondensator	Capacitor	Condensateur	Condensator	Condensatore	Condensador
F1	Überlastschutz Messer	Knife overload	Disjoncteur lame	Overbel.schakelaar mesm.	Interruttore sovraccarico lama	Disyuntor estribo cuchilla
F3	Überlastschutz Rückans.	Backgauge overload	Disjoncteur butée arrière	O. schakelaar achteraanleg	Interr. sovr. di buttata posteriore	Disyuntor escuadra trasera
F4	Sicherung	Fuse	Fusible	Zekering	Fusibile	Fusible
F5	Sicherung	Fuse	Fusible	Zekering	Fusibile	Fusible
H1	Schnittandeut	Cutting line light	Ampoule ligne de coupe	Snijlijnverlichting	Indicatore taglio	Luz línea de corte
H2	Schnittandeut	Cutting line light	Ampoule ligne de coupe	Snijlijnverlichting	Indicatore taglio	Luz línea de corte
K1/1	Schütz Messer ab	Knife-down contactor	Contacteur descente de lame	Relais mes omlaag	Interr. autom. discesa lama	Contactador bajada cuchilla
K1	Schütz Messer ab	Knife-down contactor	Contacteur desconte de lame	Relais mes omlaag	Interr. autom. discesa lama	Contactador bajada cuchilla
K2	Schütz Messer auf	Knife-up contactor	Contacteur remontée de lame	Relais mes omhoog	Interr. autom. risalita lama	Contactador subida cuchilla
K5	Relais Taster links	Relay push button left	Relais touche gauche	Relais drukknop links	Relais pulsante sinistro	Relè botón izquierdo
K6	Relais Taster rechts	Relay push button right	Relais touche droite	Relais drukknop rechts	Relais pulsante destro	Relè botón derecho
K7	Relais Verzögerung	Time-delay relay	Relais retard	Vertragsrelais	Relais di ritardo	Relè de atraso
K8	Relais Schnittwiederholung	Relay Cutting repetition	Relais répétition de coupe	Relais snijgangherhaling	Relais ripetizione taglio	Relè repitición corte
K11	Sicherheitsrelais Klappe	Relay safety flap	Relais volet de sécurité	Veiligheidsrelaiskap	Relais coperchio sicurezza	Relè tapa de seguridad
K12	Sicherheitsrelais Klappe	Relay safety flap	Relais volet de sécurité	Veiligheidsrelaiskap	Relais coperchio sicurezza	Relè tapa de seguridad
K13	Sicherheitsrelais Klappe	Relay safety flap	Relais volet de sécurité	Veiligheidsrelaiskap	Relais coperchio sicurezza	Relè tapa de seguridad
K14	Sicherheitsrelais Klappe	Relay safety flap	Relais volet de sécurité	Veiligheidsrelaiskap	Relais coperchio sicurezza	Relè tapa de seguridad

Mod. 5221-05EP  
01.04.2005

## Index 5221-05EP

- 2 -

Code	Deutsch	English	Français	Holländisch	Italiano	Espanol
<b>M1</b>	Antriebsmotor Messer	Cutting motor	Moteur lame	Snijmotor	Motore lama	Motor de corte
<b>M3</b>	Motor Rückanschlag	Backgauge motor	Moteur butée arrière	Motor achteraanleg	Motore di battuta posteriore	Motor escuadra trasera
<b>Q1</b>	Hauptschalter	Main switch	Interrupteur principal	Hoofdschakelaar	Interruttore principale	Interruptor principal
<b>R2</b>	Widerstand	Resistor	Résistance	Weerstand	Resistenza	Resistencia
<b>R9</b>	Poti Rückanschlag	Poti back gauge	Poti butée arrière	Poti achteraanleg	Poti di buttata posteriore	Poti escuadra trasera
<b>S1</b>	Taster Messer + Presse	Push button knife and clamp	Touche de commande lame + presse	Drukknop mes + pers	Pulsante lama + pressino	Botón de la cuchilla y prensa
<b>S2</b>	Taster Messer + Presse	Push button knife and clamp	Touche de commande lame + presse	Drukknop mes + pers	Pulsante lama + pressino	Botón de la cuchilla y prensa
<b>S5</b>	OT-Stopschalter Messer	Switch knife top	Arrêt lame haut	Schakelaar mes boven	Fermo lama alto	Interruptor subida cuchilla
<b>S6</b>	UT-Stopschalter Messer	Switch knife bottom	Arrêt lame bas	Schakelaar mes beneden	Fermo lama basso	Interruptor bajada cuchilla
<b>S7</b>	OT-Stopschalter Presse	Switch clamp on top	Arrêt presse Haut	Schakelaar persbalk boven	Fermo pressino alto	Interruptor subida prensa
<b>S8</b>	Schalterschloß	Key switch	Contacteur · clé	Sleutelschakelaar	Interruttore a chiave	Llave interruptor
<b>S10</b>	Sicherheitsschalter Klappe	Switch safety flap	Micro-contact volet de sécurité	Veiligheidsschakelaar kap	Interr. coperchio sicurezza	Interruptor tapa de seguridad
<b>S11</b>	Sicherheitsschalter Klappe	Switch safety flap	Micro-contact volet de sécurité	Veiligheidsschakelaar kap	Interr. coperchio sicurezza	Interruptor tapa de seguridad
<b>S12</b>	Sicherheitsschalter Klappe	Switch safety flap	Micro-contact volet de sécurité	Veiligheidsschakelaar kap	Interr. coperchio sicurezza	Interruptor tapa de seguridad
<b>S14</b>	OT-Presser Elektronik	Switch clamp up	Micro-contact presse en position haut	Schakelaar pers omhoog	Interruttore elettr. pressino in alto	Interruptor subida prensa
<b>S15</b>	Rückanschlag vorne/Stop	Switchg backgauge forward/stop	Fin de course avant butée arrière	Schakelaar schakelpunt voor	Interruttore anteriore	Interruptor marca frontal
<b>S16</b>	Rückanschlag rück/Stop	Switch backgauge backward/stop	Fin de course arrière butée arrière	Schakelaar schakelpunt achter	Interruttore posteriore	Interruptor marca trasera
<b>T1</b>	Transformator	Transformer	Transformateur	Transformator	Transformatore	Transformador
<b>T2</b>	Transformator	Transformer	Transformateur	Transformator	Transformatore	Transformador
<b>V1</b>	Diode	Diode	Diode	Diode	Diodo	Diode
<b>V2</b>	Diode	Diode	Diode	Diode	Diodo	Diode
<b>V3</b>	Diode	Diode	Diode	Diode	Diodo	Diode
<b>V12</b>	Gleichrichter Bremse	Rectifier	Redresseur frein	Gelijkrichter rem	Raddrizzatore freno	Rectificador
<b>V14</b>	Gleichrichter Rückanschl.	Rectifier backgauge	Redresseur butée arrière	Gelijkrichter achteraanleg	Redrizzatore di battuta posteriore	Rectificador escuadra trasera
<b>Y1</b>	Bremse Messermotor	Brake, knife motor	Frein moteur de lame	Rem snijmotor	Freno motore lama	Freno motor cuchilla
<b>Y2</b>	Bremse Pressmotor	Brake, clamp motor	Frein moteur de presse	Rem persmotor	Freno motore pressino	Freno motor prensa
<b>Z1</b>	Drossel	Throttle	Self	Ontstoorspoel	Valvola di regolazione	Válvula reguladora
<b>Z2</b>	RC-Filter	Radio frequency suppressor	Frein moteur de presse	Ontstoorfilter	Filtro antidisturbo	Filtro RC
<b>Z3</b>	Drossel	Throttle	Self	Ontstoorspoel	Valvola di regolazione	Válvula reguladora

Mod. 5221-05EP

01.04.2005

# Mod. 5221-05EP

01.04.2005

